



# *Harbour View*

CREMATORIUM | FUNERAL HOME | WOODLAND BURIAL GROUND





## A BRIEF INSIGHT INTO THE HISTORY OF HARBOUR VIEW

Before 2005, Harbour View was a collection of Victorian agricultural buildings with adjoining fields. Although largely derelict, the site enjoyed spectacular, far-reaching views of Poole Harbour and the hills of Purbeck beyond.

It is surrounded by mature woodland, incorporating some magnificent, ancient trees.

We purchased the farm and created a woodland burial ground which respected the natural beauty of the location. We paid particular regard to the vibrant eco-system of wildlife and actively re-planted indigenous trees and shrubs to enhance the location.

Such was the success of Harbour View that we commissioned a new crematorium to be built, the first in Dorset for over 30 years. We encourage you to visit Harbour View if you are arranging a funeral or considering a prepaid funeral plan for yourself.

*Christopher, Steven and Paul Tapper*

*a beautiful place  
for memories*

We believe funerals should happen at a natural pace, without the pressure of a slim time-slot.

And funeral times should be convenient to mourners, rather than simply squeezed into a schedule. We also believe that funerals should take place at a location which is beautiful and uplifting, whether they are of a religious or non-religious nature.



# *The Long Barrow...*

The crematorium has been built by craftsmen using natural materials, many of which have been sourced locally, including an abundance of Purbeck stone and local hardwoods.

*uplifting*







# *contemporary*

Our recently constructed Long Barrow houses the state-of-the-art crematorium, along with the main ceremony hall, which can accommodate very large congregations. A large reception area and tea room is ideal for gatherings after a funeral and enjoys far-reaching views of the hills of Purbeck and Poole Harbour.

In 2018, we opened our own entirely new and unique crematorium in the heart of the Dorset countryside, overlooking beautiful Poole Harbour and the Purbeck Hills.







*Design based on a long barrow.*

*traditional*

The building has been designed to reflect the traditional long barrow, used by our ancient ancestors to bury their dead.







# *modern*

The striking, modern design is both memorable and uplifting. The building is a combination of bold shapes and traditional materials, set against an ancient landscape.







*Large reception area and tea room.*

Funeral services at Harbour View are separated by a minimum of 90 minutes, so there's no need for mourners to leave swiftly after the service, giving them time to reflect.

*tranquil*





*Purbeck Stone, cedar wood and vibrant colours  
combined with modern audio-visual facilities*

The Long Barrow is the largest of our ceremony halls and can seat very large congregations but the seating and screening can be arranged to make smaller congregations more intimate.

*flexible*

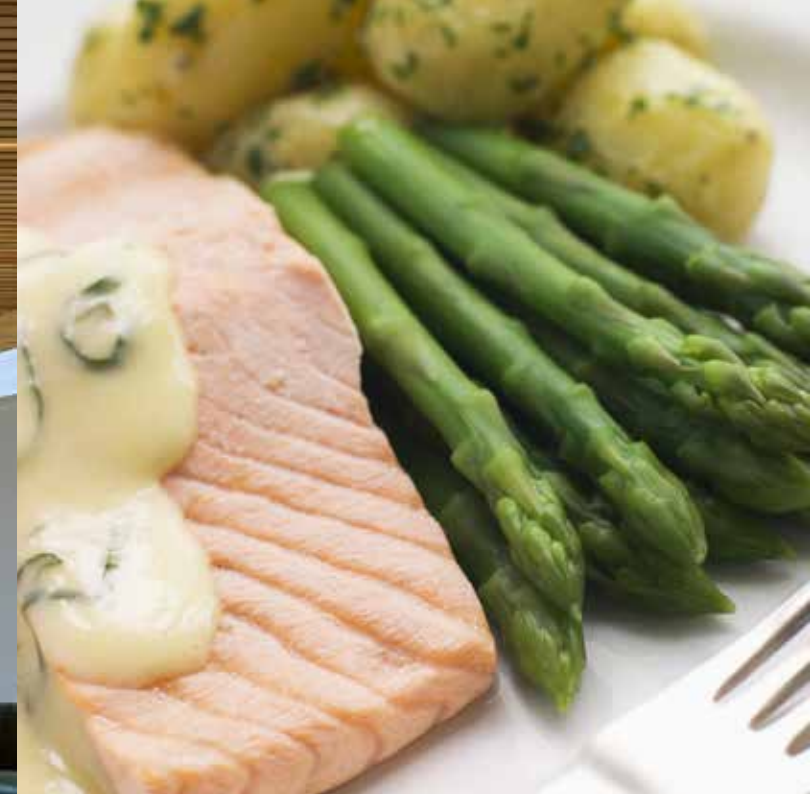




*Our Purbeck Tea Room reception area.*



Our flexible catering facilities can provide everything from tea and cakes to a freshly-prepared buffet lunch using local produce, along with a licensed bar.





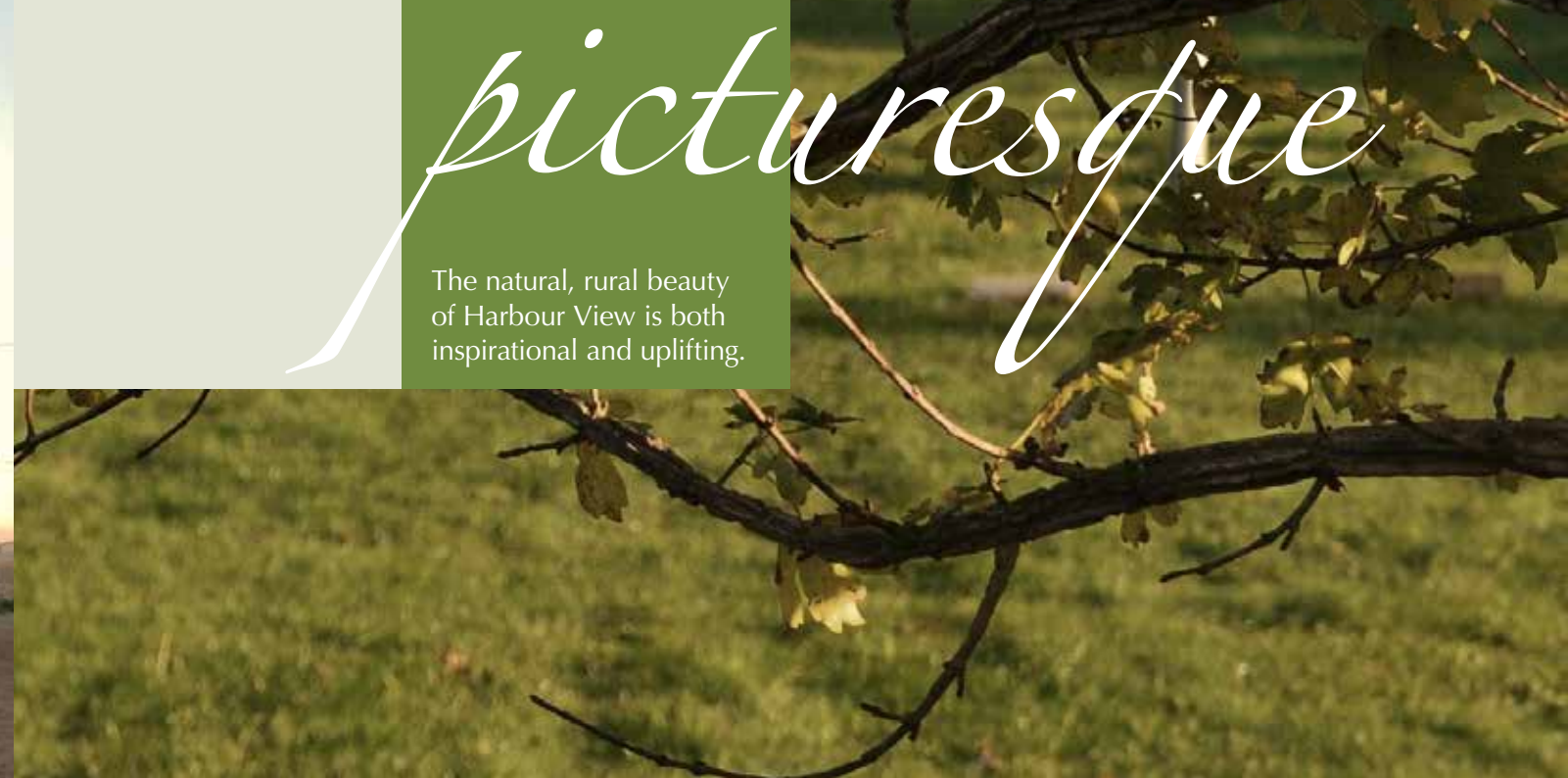
# *The Barn...*

The Barn is one of the original farm buildings and was renovated to a high standard in 2014 to create a medium-sized ceremony hall, comfortably seating up to 60 people. It also incorporates private chapels of rest. The ceremony hall can be used for receptions after the funeral.



*picturesque*

The natural, rural beauty of Harbour View is both inspirational and uplifting.







# *beautiful*

We've created an environment that is aesthetically pleasing and which reflects the natural world.



*The Barn Ceremony Hall*





The changing seasons  
are tangible at Harbour  
View, each having their  
own beauty.





*Harbour Lodge, a self contained smaller Ceremony Hall and reception area.*



The grounds of Harbour View provide a beautiful setting for woodland burial or scattering ashes. We also encourage planting of memorial trees and siting of benches, to create areas of contemplation and reflection.

Breathtaking countryside views are a hallmark of Harbour View and help create positive memories for mourners.

*far-reaching*

## *Harbour Lodge...*

Harbour Lodge was our first Ceremony Hall at Harbour View. It is constructed in a rustic log-cabin style, which integrates well with the surrounding woodland. Harbour Lodge is a smaller, more intimate venue suitable for congregations of up to 40 people. It can also be used as a reception venue after a funeral.







*The Bluebell Woods.*

# *established*

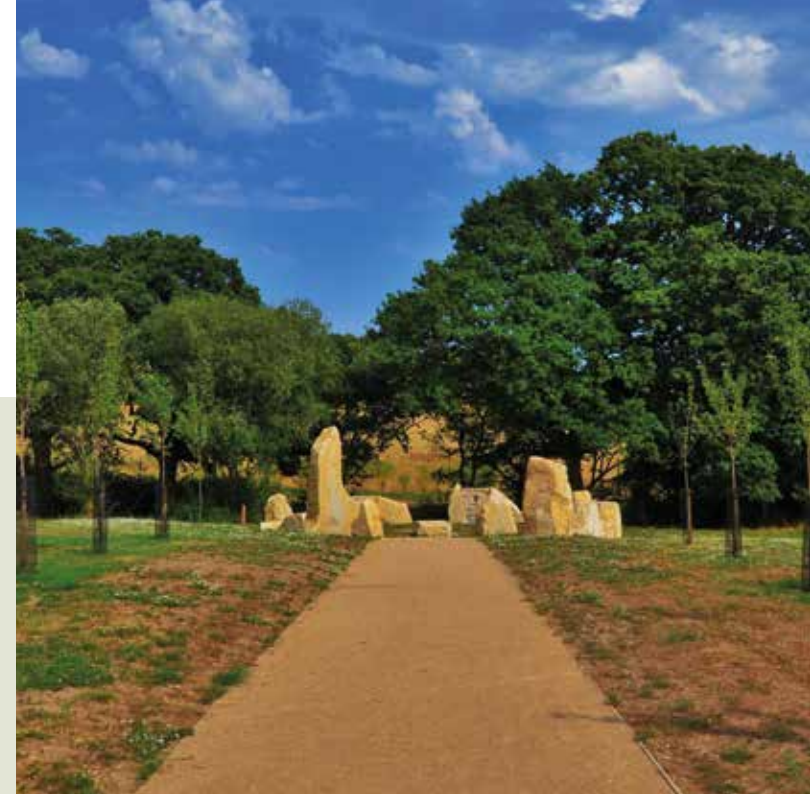
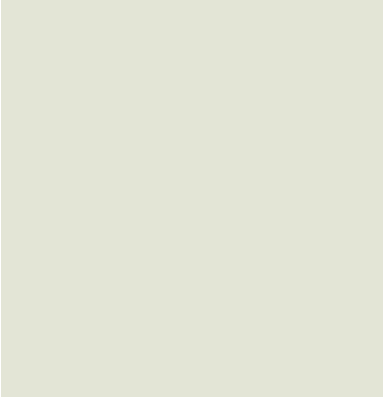
Ancient woodland combines with indigenous flora and fauna to create a magical setting removed from the pressures of an urban environment.







# *The henge*



Our traditional henge, made from local stone, provides an inspirational location for outdoor funeral services. Indoor facilities are available as an alternative in the event of poor weather.



*we look forward to  
welcoming you at  
Harbour View*

Visitors are always welcome at Harbour View, whether to remember a loved one or to consider plans for the future.





# getting in touch

## CONTACTING HARBOUR VIEW & ASSOCIATED TAPPER FUNERAL HOMES

|   |   |              |    |  |              |
|---|---|--------------|----|--|--------------|
| 1 | LYTCHETT MINSTER<br>Harbour View, Randalls Hill, BH16 6AN       | 01202 630111 | 6  | RINGWOOD<br>29a Southampton Rd, BH24 1HB             | 01425 472104 |
| 2 | POOLE<br>32-34 Parkstone Rd, BH15 2PG                           | 01202 673164 | 7  | CHRISTCHURCH<br>89-91 Barrack Rd, BH23 2AJ           | 01202 478887 |
| 3 | BROADSTONE<br>173 The Broadway, BH18 8DH                        | 01202 694449 | 8  | NEW MILTON<br>51-53 Old Milton Rd, BH25 6DJ          | 01425 629000 |
| 4 | BOURNEMOUTH<br>987 Wimborne Rd, BH9 2BS                         | 01202 549555 | 9  | MILFORD ON SEA<br>Wallis House, 28 High St, SO41 0QD | 01590 644664 |
| 5 | BOSCOMBE (Memorial Masonry)<br>893-895 Christchurch Rd, BH7 6AU | 01202 432200 | 10 | HIGHCLIFFE ON SEA<br>257 Lymington Rd, BH23 5FD      | 01425 272764 |



Visit us online at [www.harbourview.co.uk](http://www.harbourview.co.uk)